

Cory Family Society Newsletter

Volume 30, No. 1

coryfamsoc.com

March 2019

In This Issue

- 1 **Reunion Invitation**
July 11-14, 2019
Des Moines, Iowa
- 2 **Board Reports**
- 6 **In Memoriam**
Dr. Arthur T. Corey
- 7 **A Look at William of Portsmouth's Y-DNA**
- 10 **Exploring John of Southold's Ancient Origins**
- 11 **A Cory Family Story**
Horace Wesley Cory
(1859-1934)
- 15 **Using Google Earth for Genealogy**
- 16 **Do You Know Gertie?**
- 17 **About "Corys Slept Here"**
- 18 **Corys Slept Here**
- 20 **Our Cory Cousins**
UK Cory Family Friends
June 3-7, Hampshire,
- 20 **As Seen on Facebook**
- 20 **From the Editors**
Remaining 2019
Due Dates

WE'RE ALL INVITED

TO THE

CORY FAMILY SOCIETY REUNION !!



gograph.com, purchased

Des Moines, Iowa

Thursday, July 11 to Sunday, July 14, 2019

Joe Cory, our coordinator and host, is of the John I line and a longtime resident of Des Moines. He is descended from one of the earliest Iowa Cory families.

Thursday, July 11

Arrive at Sheraton West Des Moines. Pick up final information at front desk. Meet and greet around 5:00 pm in the hotel's Waterfall Lounge. Dinner on your own.

Friday, July 12

TOURS – Capitol Building and State Historical Museum, Des Moines capitol area

LUNCH – Machine Shed Restaurant, Urbandale

VISIT – Living History Farms, Urbandale

GROUP DINNER – TBD

Saturday, July 13

VISIT—Cory Grove Church, Elkhart

VISIT – Principal Park, Des Moines capitol area

LUNCH – Iowa Tap Room, nearby

VISIT – Salisbury House & Gardens

GROUP DINNER – TBD

Sunday, July 14

HOTEL CHECK OUT

LUNCH/SOCIETY MEETING in conference room, adjourn about 2:30 pm

Cory Family Society Biennial Meeting Agenda

- A. Introductions
- B. Thank you to our host – Joseph Cory
- C. Reading of Minutes – Carolyn Corey
- D. Treasurer’s Report – Christina Cory
- E. Genealogy/DNA Project Report – Thomas Corey
- F. Website & Database Report – Earl Cory
- G. Future of Society Discussion (Bring ideas and suggestions or contact John Corey, President.)
- H. Location and Date for next Cory Family Society Reunion
- I. Approval for expensing of 2019 reunion and meeting
- J. Adjournment

It’s Not Too Late!

Joe tells us that about 25 people have already signed up, but the more the merrier!

SIGN UP ONLINE: Use our [online registration form](#), as seen on the Cory Family Society website.

SIGN UP BY MAIL: Print out the [registration form](#), also as seen on the Society website, and mail it to Joe at

Joe would like to have all registrations by June 1. If you decide after that, e-mail him at josephccory@hotmail.com to let him know you are coming – and book your hotel as below.

Reunion registrants will receive a confirming email with costs and other details, as well as whether we will have a bus or depend on carpooling.

BOOK YOUR HOTEL: We have set up a direct link with the Sheraton West Des Moines at [Reslink](#).

Note: This link only works for the reunion dates, July 11-14, 2019. If you need dates before or after, contact the hotel directly at 515-223-1800.

QUESTIONS/COMMENTS/SUGGESTIONS: Get in touch with Joe as he finalizes plans and arrangements.

BOARD REPORTS

From the President – John Corey

In this issue I tell of a field trip which is proof positive that genealogy is definitely an outdoor activity! With cousin Chris Koehler and goodwife Sue, we followed up on an invitation to visit Mr. Vinnie Begley, archivist for the Carmelite monastery in Middletown, New York, -- home of my grandfather and birthplace of my father. We toured the grounds, re-created an almost-famous image of the home, and visited the cemetery. I hope you enjoy the tale.

Meanwhile, cousin Joe is preparing for the July reunion in his hometown of Des Moines, Iowa (you ARE coming, right?), and at the same time he’s planning to join the UK Corys at the annual fest in June.

On the DNA front, there is some activity in Y-sequencing that may link the John line to Norway!
 Lots of people doing lots of things behind the scenes. Aren't you glad to be part of it all?

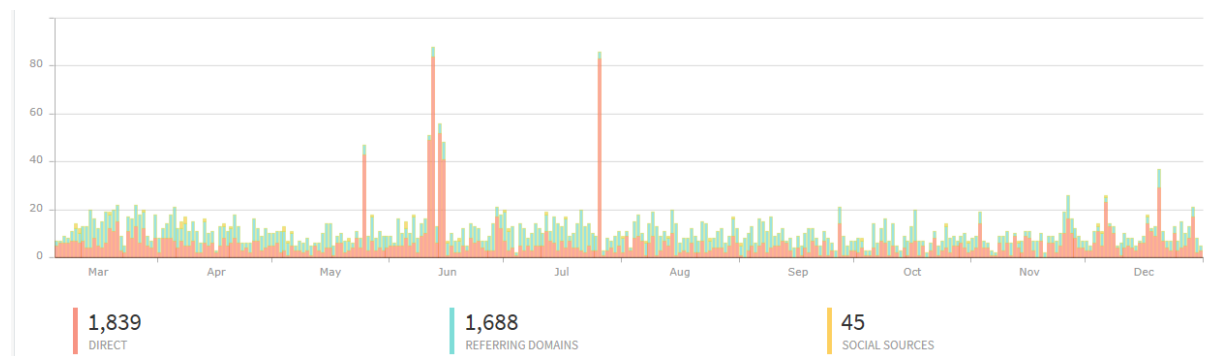
From the Webmaster - Earl Cory

Website Summary for 2018

SITE VISITS

During 2018 CoryFamSoc.com was visited 3,572 times. The visits came from three sources:

1. DIRECT VISITS: 1,839. 51% of our visitors typed the url directly into their device or had it bookmarked in their browser.



The following table shows the number of visits to each of the pages on the site that we are gathering statistics for. We do not get information on visits to PDF files or any of the thousands of genealogy pages.

As in the past, the most visited page, aside from the home page, is the page on the Salem Witch Craft Trials. This usually reaches a peak when junior high/middle school papers are due.

URL	TITLE	VISITS
coryfamsoc.com/	Cory Family Society	1416
coryfamsoc.com/articles/witch.htm	Salem Witch Craft Trials	202
coryfamsoc.com/about_us/index.html	About Us	185
coryfamsoc.com/articles/coats_of_arms.htm	Coats of Arms	153
coryfamsoc.com/articles/coray.htm	William Coray	149
coryfamsoc.com/genealogies/	Genealogies	128
coryfamsoc.com/about_us/cory_society.htm	Cory Society	125
coryfamsoc.com/articles/revolution.htm	Corys in the Revolutionary War	105
coryfamsoc.com/articles/francis_drake_hoax.html	The Francis Drake Association Hoax	90
coryfamsoc.com/articles/david/david.html	In a Land Not Sown The Life and Times of	89
coryfamsoc.com/dna-project/dna.html	DNA Tutorial	55
coryfamsoc.com/newsletters/index.html	Newsletters	51
coryfamsoc.com/dna-project/index.html	DNA Project - Part 1	47
coryfamsoc.com/articles/names.htm	Names	42

coryfamsoc.com/contact/index.aspx	Contact Us	40
coryfamsoc.com/publications/index.html	Publications	40
coryfamsoc.com/resources/index.html	Resources	35
coryfamsoc.com/articles/david/david_003.html	In a Land Not Sown The Life and Times of	31
coryfamsoc.com/articles/david/david_002.html	In a Land Not Sown The Life and Times of	28
coryfamsoc.com/articles/dr-benjamin-cory.html	Dr. Benjamin Cory	24
coryfamsoc.com/resources/bibliography_page_3.htm	bibliography_page_3.htm	20
coryfamsoc.com/resources/census_1850/ny.htm	NY	18
coryfamsoc.com/forms/application.aspx	application.aspx	15
coryfamsoc.com/publications/english_corys.html	The English Corys	14
coryfamsoc.com/articles/david/david_001.html	In a Land Not Sown The Life and Times of	13
coryfamsoc.com/articles/famous.html	Famous Corys	13
coryfamsoc.com/forms/index.html	Forms	13
coryfamsoc.com/articles/cory_pitcher.htm	The Corey Pitcher	12
coryfamsoc.com/faq/index.html	Frequently Asked Questions	12
coryfamsoc.com/forms/meeting.aspx	Meeting - 2019	12
coryfamsoc.com/about_us/gone_but_not_forgotten.htm	Gone But Not Forgotten	11
coryfamsoc.com/resources/census_1850/vt.htm	VT	11
coryfamsoc.com/articles/index.html	Articles	10

2. VISITS THROUGH REFERRING DOMAINS: 1,688. 47% of our visitors typed the url directly into their device or had it bookmarked in their browser.

REFERRER	VISITS	REFERRER	VISITS
google.com	1364	blog100.org	1
bing.com	149	blogstar.fun	1
yahoo.com	62	bt.com	1
duckduckgo.com	24	corycomputersystems.com	1
ancestraltrails.ca	15	ecosia.org	1
aol.com	9	genealogy.com	1
com.google.android.googlequicksearchbox	7	hiblog.top	1
rootsweb.com	7	info.com	1
iagenweb.org	5	juno.com	1
coryfamsoc.com	4	lenovo.com	1
getpocket.com	4	linkpendium.com	1
maxlynds.com	4	mediacomtoday.com	1
corygenealogy.com	3	myprivatesearch.com	1
familytreecircles.com	3	myway.com	1
instagram.com	3	pch.com	1
axtell-surname.org.uk	2	searchencrypt.com	1
kakablog.net	2	soef.net	1
the-red-thread.net	2	tripod.com	1
		worldcat.org	1

3. VISITS THROUGH SOCIAL MEDIA SOURCES: 45. 1% of our visitors came from our Facebook page (41 visits) and Outlook (4 visits).

DEVICES AND PLATFORMS

Not surprisingly, 70% of the people visited the site using a desktop computer as opposed to a mobile device. Of the 2500 desktop visits, 172 were from MACs (6.8%); that is consistent with other stats I have seen as to the ratio of devices in use (regardless of what you see on TV.)

As for browsers that people are using, it appears that Google Chrome is winning. This must be because of all the little annoying pop-ups that Google keeps putting on your screen and all those defaults that are not unchecked when people install software. This shows that people just don't check speed and performance of their browser. If they did, Edge would be number one and Firefox number two. For people using older operating systems like Windows XP or Windows 7, they really would see significant performance improvement using Firefox, but then again, you would get that annoying pop-up from Google telling you to use Chrome.

For mobile devices, 72% are from iPhones or iPads.

DEVICE	PLATFORM	VISITS	DEVICE	PLATFORM	VISITS
desktop	All	2500	mobile	All	1072
desktop	Chrome	1539	mobile	iOS	776
desktop	Edge	309	mobile	Android	234
desktop	Firefox	210	mobile	Windows	14
desktop	Safari	172	mobile	Other	48
desktop	Other	270			

From the Genealogist/DNA Project Coordinator Thomas Corey Cory DNA Testing Needed

As a surname research project, the use of Y-DNA has helped us establish the different Cory descent lines in America. The original Cory DNA Project was done to establish the relationship, if any, among the first three Cory men in America. We now know that the three men had no relationship among them.

As advances in DNA technology allow for deeper understanding of our genetic roots, we ask Cory Family Society members for assistance in our search for knowledge of our ancestry.

You may recall that in the June 2018 newsletter we asked for females whose family lore has them descended from Elizabeth Gassesett and John Corey to contact us for information about DNA testing to help determine if there is a factual base for the Minnetanko legend. Complicating the research is that any Native American DNA is dilute across so many generations that it is impossible to determine descendency through Native American DNA alone without a paper trail. Although we have had inquiries, unfortunately genealogical documentation is also needed.

In this issue you will find two articles asking for Y-DNA testing by Cory men. We are interested in William of Portsmouth's lines of descent and in John of Southold's European origins.

The Cory Family DNA Project is an ongoing project at familytreedna.com.

Meet leaves on your family tree at the CFS Reunion July 11-14 in Des Moines!!



IN MEMORIAM

Dr. Arthur T. Corey

1919 - 2018



Arthur Thomas Corey passed away on December 4, 2018, in Ft. Collins, Colorado, having sustained injuries from a fall a few days earlier. After a rich life of many professional and personal accomplishments, Art's final goal to become a centenarian was unfulfilled; he missed by only four short months.

For many years, Art has been a vital presence in the Cory Family Society. In 1999, he took on two important duties for us, the first being interim President until 2001 when Fred Corey, one of Art's students, took over as president. And the second, with the help of our late genealogist Charlotte Muller, was initiating and coordinating DNA research to determine any genetic relationships amongst the three main Cory/Corey family lines in North America. As a continuing legacy to us, the Cory/Corey DNA Project can be found through the link on our home page.

Art continued in his role of DNA Project manager until 2001. As a result of the project, Art learned that he was of the Thomas of Chelmsford (Harpole Corys) line, rather than of the William of Portsmouth (Bristol Corys) as he had previously had reason to believe. His DNA sample has identical Y-chromosome markers to Colin Cory of Harpole, England, a longtime member of the United Kingdom Cory group and member of our society.

To date, we have only been able to trace Art's lineage back five generations to Martin C. Corey (1790-1847) but not to either Thomas or another Harpole Cory.

Art was born on April 8, 1919, in Pasadena, Maryland. During the Great Depression, Art and his siblings and mother, Mabel Frances (Davis) Corey, farmed their property while his father, Daniel P. Corey, worked nearby in Baltimore as a machinist. After graduation from high school and having a year of college at the University of Maryland, Art was one of the first five WWII draftees in his region. Sponsored by the military, he studied Civil Engineering at Pennsylvania State University prior to serving overseas in Europe and the Far East. After returning from service he completed a bachelor's degree in Soil Science at the University of Maryland, continued for a Master's Degree in Irrigation Engineering at Colorado A&M, followed by a PhD at Rutgers University in New Jersey in Soil Physics and Physical Chemistry, specializing in ground water.

Art worked for a few years at the Gulf Oil Corporation near Pittsburgh, Pennsylvania, and in 1955, he and his late wife Vera and their sons Philip and Paul moved back to Fort Collins, Colorado. He was first employed by the experiment station at what was then Colorado A&M as a ground water scientist, eventually becoming a full professor at Colorado State University (CSU) in the Department of Agricultural Engineering.

Art always enjoyed traveling. In 1959, while at CSU, he was persuaded by the late Dr. Maurice Albertson to take his family to Bangkok, Thailand, to teach for the first two years of the SEATO Graduate School of Engineering, now known as the Asian Institute of Technology. (Dr. Albertson, no doubt inspired by his success at organizing a graduate school in a foreign country, went on to assist in the creation of the Peace Corps and numerous other activities.)

Art convinced some of his Thai students to return to CSU for PhD degrees. Perhaps his most famous former Thai student is Dr. Subin Pinkayan who, among his many accomplishments, served as Minister of Foreign Affairs for the Royal Thai Government (roughly equivalent to the US Secretary of State) and founded SEATEC, a large international engineering consulting firm based in Thailand. Dr. Pinkayan lived with the Corey family during his first year at CSU and has remained close to the Corey family since then.

In 1965 Art worked on a water project in Lahore, Pakistan, from which he was evacuated when a war between India and Pakistan broke out after he had only worked there for a few months. Near his retirement he was a visiting professor at the Swiss Federal Institute of Technology while on sabbatical there. After retiring from CSU in 1975, Art taught and also worked as a water scientist in Ireland, Turkey, and Sri Lanka, as well as various state universities in the United States. Later, he lived in Ft. Collins and in Las Cruces, New Mexico, and worked into his late 90's with his son Dr. Philip D. Corey, now retired from Boeing, on various technical papers in his field of ground water dynamics, and on his memoirs.

Art continued his interest in genealogy, and in addition to his many technical publications was his *The Coreys of Bodkin Creek*, privately published, April 1990; in the collection of the Denver Public Library. Art was always available for us to turn to for Cory Family Society advice.

Art was preceded in death by his wife of 73 years, Vera (Karel) Corey (1917-2016), who died a couple of months short of her 99th birthday; by three of his sisters, Rose, Isabel, and Ellen; and by his two brothers Danny and Albert. He is survived by his sister Mabel Zwobot; his son Philip Corey (Nafise Nili) and their daughters Camilla and Danielle and their adopted son/nephew Richard Pana (Clare Steedman) and their daughters Julia and Valerie; and his son Paul Corey (Jean Elise Honea). Of course, Art has a multitude of nieces and nephews from his sisters and brothers.

Art has been a powerful influence on all who have known him, including those who have studied and worked with him, and he has been a leader in his field of research. He is greatly missed. ★★★

It's In Our DNA

A LOOK AT WILLIAM OF PORTSMOUTH'S Y-DNA

Thomas Corey (Genealogist/DNA Project Coordinator) and Andrew Shetland (both William of Portsmouth)

By looking at the differences and similarities in the Y-DNA markers, conclusions can be drawn about a DNA tester's most recent common ancestors (MRCA). Something has to be known first through old-fashioned paper trail genealogy to be able to make those comparisons. With that in mind, we set out to determine the paternal line of each of our William of Portsmouth project members. While it isn't visible on the family tree DNA (FTDNA) website, we also created a standalone spreadsheet to compare results previously obtained through samples of participants in

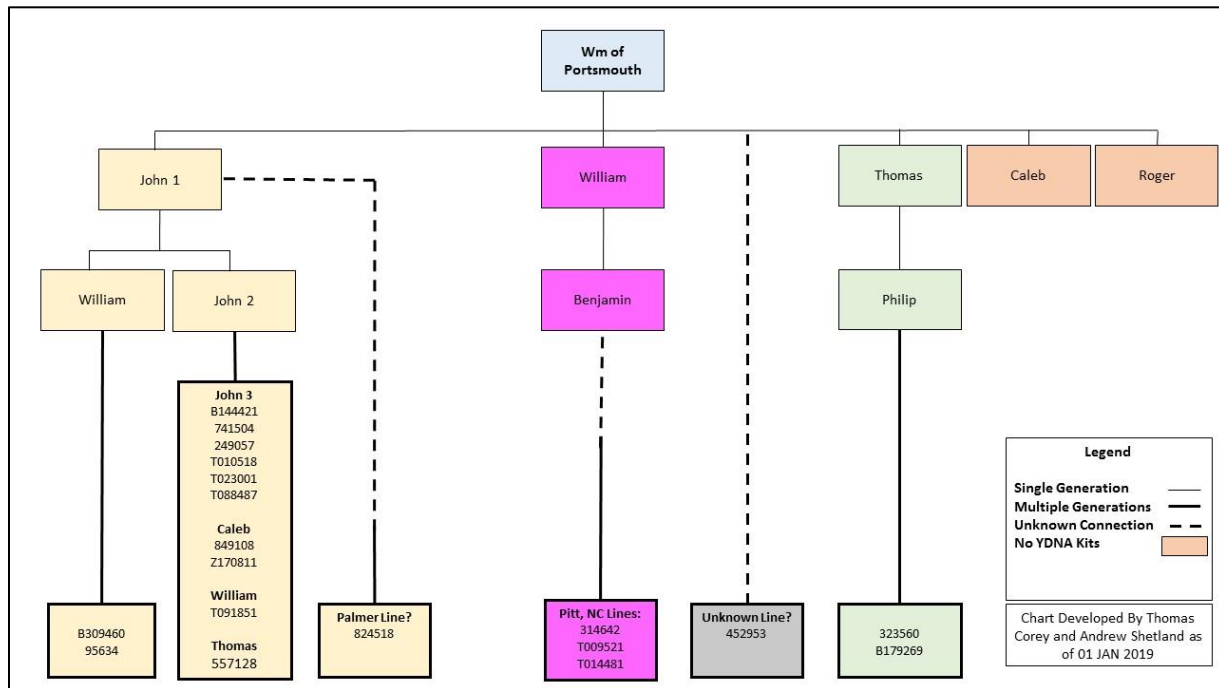
the Relative Genetics (RG) first wave of testing in the early 2000's (these were only 37 marker Y-DNA tests at the time).

In the will of William Cory, dated 4 January 1681, we see that his surviving male heirs were John, William, Thomas, Caleb, and Roger:

To eldest son John, certain land in Portsmouth, with Housing, etc., for life and to such children he may will it to.... To son William, great lower room of southerly part of dwelling house, which now at this time I inhabit... and at decease of my wife his mother, he to have all rest of the lands and house for life... To third son Thomas, at twenty-one a half share in Pocasset lands divided and undivided. To fourth son Caleb, at age, a third of a share in Dartmouth, for life. To fifth son Roger, at age the other half share in Pocasset land.

It is to these five heirs of William of Portsmouth that we assigned our William of Portsmouth project members by comparing similarities and differences. Admittedly the paternal lines that we have for each of our member kits was provided to us as is known by the members themselves and has not been exhaustively proven. However, it is a start.

William of Portsmouth Lines of Descent



We need a larger sample population to look at for individual marker results. The more markers tested and the more kits tested, the better our understanding of these differences and similarities will become. Thus, we may be able to draw conclusions regarding lines of descent. For instance, we could conclude that if a member had the following markers that they were descended through son Thomas versus son John:

- At DYS 576 18 versus 19
- At CDY 38-38 versus 38-39
- At DYS 537 12 versus 11
- At DYS 534 16 versus 15
- At DYS 444 14 versus 13
- At DYS 485 14 versus 15
- At DYS 462 12 versus 11
- At DYS 643 10 versus 11

We are also speculating the line of descent for our North Carolina William of Portsmouth cousins based on a 1904 Cory family transcript from Boston, Massachusetts, that indicates Benjamin Cory (Wm, Wm2, Benjamin) relocated to Tyrell, NC in the early 1700's. More documentary evidence will need to be uncovered to prove this line back to their Rhode Island cousins. With the limited samples in the North Carolina pool there are only two differences between son William versus son John that are seen at this time:

- At DYS 456 15 versus 16
- At CDY 38-38 versus 38-39

The Y-DNA markers selected in the below chart have been selected because they are locations where differences can be seen amongst our Wm of Portsmouth member's markers. Kit B144421 was the baseline for comparison purposes only. We have also listed the paternal lines through eight generations, leaving the last few generations unnamed for member privacy considerations. The blanks in the chart are areas where members have tested less than the Y-111 level and are markers that were not tested for those kits. Kits with a "T" or "Z" preceding the number are RG kits.

Select Y-DNA Markers of FTDNA and RG Project Members

Kit Number	Paternal Ancestor Name	DYS388	DYS439	DYS458	DYS459	DYS464	DYS466	DYS576	CDY	DYS537	DYS641	DYS472	DYF408S	DYS413	DYS534	DYS444	DYS486	DYS462	Y-GATA-A1C	DYS441	DYS643	DYS461	
B309460	Wm, John, Wm, Anthony, Wm, Daniel, John, Daniel, x, x, x, x	11-14	12	17	9-10-10	13-15-17-17-17	16	19	37-37-39	11	10	8	11	23-23	15	13							
95634	Wm, John, Wm, Anthony, Wm, Wm, Wm, Charles, x, x	11-14	12	17	9-10	13-15-17-17	16	19	37-37	11	10	8	11	23-23	15	13							
B144421	Wm, John, John, John, Paris, John, Paris, Wm, x, x, x, x	11-14	12	17	9-10	13-15-17-17	16	19	38-39	11	10	8	11	23-23	15	13	15	11	13	13	11	11	
741504	Wm, John, John, John, Abel, Clarke, Daniel, James, x, x	11-14	12	17	9-10	13-15-17-17	16	19	38-39	11	10	8	11	23-23	15	13							
249057	Wm, John, John, John, Benedict, Archibald, Aaron, Myron, x, x, x	11-14	12	17	9-10	13-15-17-17	16	19	38-39	11	10	8	11	23-23	15	13							
T010518	Wm, John, John, John, Abel, Clarke, Daniel, Philip, x, x, x	11-14	12	17	9-10	13-15-17-17	16									13		11	15	14		11	
T023001	Wm, John, John, John, Sheffield, John, John, Walter, x	11-14	12															11	15			11	
T088487	Wm, John, John, John, Benedict, Archibald, Archibald, Elisha, x, x, x	11-14	12	17			16									13		11	15	14		11	
849108	Wm, John, John, Caleb, Wm, Wm, Harvey, Edgard, x, x, x, x	11-14	12	17	9-10	13-15-17-17	16	19	38-39	11	10	8	11	23-23	15	13							
Z170811	Wm, John, John, Caleb, Wm, Wm, Harvey, Edgard, x, x	11-14	12	17		13-15-17-17	-														14	11	
T091851	Wm, John, John, Wm, Wm, Joseph, Daniel, George, x, x, x	11-14	12															11	12			11	
557128	Wm, John, John, Thomas, Gideon, Wm, Gardner, Wm, x, x	11-14	12	17	9-10	13-15-17-17	16	19	38-39	11	10	8	11	23-23	15	14							
824518	Palmer ** NPE about 1806	11-14	12	17	9-10	13-15-17-17	16	19	38-39	11	10	8	11	23-23	15	13	15	11	13	13	11	11	
314842	** NC Line --> Wm, Wm, Benjamin	11-14	12	17	9-10	13-15-17-17	16	19	38-39	11	10	8	11	23-23	15	13	15	11	13	13	11	11	
T006251	** NC Line --> Wm, Wm, Benjamin	11-14	12															11	13			11	
T014482	** NC Line --> Wm, Wm, Benjamin	11-14	12															11	13	-		10	
452953	Unknown	10-14	12	17	9-10	13-15-17-17	16	19	38-39	11	10	8	11	23-23	15	13							
323560	Wm, Thomas, Philip, Philip, Joseph, Philip, Wm, Joseph, x, x	11-14	12	17	9-10	13-15-17-17	16	19	38-39	12	10	8	11	23-23	16	14	14	12	13	13	10	11	
B179269	Wm, Thomas, Philip, Philip, Joseph, Philip, Wm, Joseph, x, x, x	11-14	12	17	9-10	13-15-17-17	16	19	38-39	12	10	8	10	23-23	16	14	14	12	13	13	10	11	

The difficulty with drawing these types of conclusions becomes determining at exactly what generation these mutations occurred to create the difference from the original Wm of Portsmouth set of gene markers. Taking a look at the chart above it can be noted that the majority of kits currently in the project are through son John. Currently we believe there are no kits in our project from sons Caleb or Roger. When looking at our son John kits there are variations that can be seen at various generations as well that could help us further identify possible lines of descent. As our project grows and more data is obtained, we may be able to tell members at least a portion of their line of descent just by looking at those subtle differences and similarities in markers.

We encourage any members who have tested below the Y-111 marker to increase your testing level to Y-111. If you are reading this and haven't tested at FTDNA please consider doing so by going to www.familytreedna.com. At the top of that screen, select JOIN if you aren't already a member.

Please reach out to Andrew Shetland at 19ashetland@gmail.com with any corrections or mistakes that we have made in the genealogies or with questions about joining the FTDNA project.★★★

EXPLORING JOHN OF SOUTHOLD'S ANCIENT ORIGINS

David A. Cory, Joseph Cory, and R. Mark Cory (all John of Southold)

The three of us, David, Joe, and Mark, all well-documented descendants of equally well-documented John I descendant Jeremiah William Cory (1793-1860) have come across new DNA technology that may confirm John I's origins.

As we all know, a number of Cory Family Society members are descendants of the ancestor we refer to as John I, a weaver known to have lived at Southold, Long Island, in the 17th century. His presence there is documented in numerous government records. Over the centuries his descendants have dispersed across America and the world, yet his whereabouts before immigrating to colonial America are unknown. Claims that he came from Bramerton Hall or elsewhere in England or from Scotland are unsubstantiated. Conventional genealogical methods, as well as efforts to find DNA links with our UK Cory Family Friends "cousins," have failed to uncover the origins of John I. Advances in DNA technology now offer an alternative means of research.

The Y chromosome is passed from fathers to sons with only small changes (mutations) over long periods of time. These characteristics of Y-DNA allow individual males to be placed in haplogroups with others sharing the same pattern of DNA. By studying these haplogroups, it is possible to establish migration patterns over thousands of years and to estimate when particular mutations, resulting in subdivisions called subclades, occurred.

We – David, Joe, and Mark – have established that we all are in the R1a haplogroup and the subclade R-Y20128. Thus, it is likely that our common John I ancestor Jeremiah was also in the R-Y20128 subclade, which resides in the R-Z2284 branch -- generally a Scandinavian branch. The R-Y20128 subclade is estimated to have formed around 1600 years ago and appears to now be found today primarily in men living around the southern portions of Norway and Sweden.



European Journal of Human Genetics
(2014)

"The phylogenetic and geographic structure of Y-chromosome haplogroup R1a"; Figure 2 (c) Z284;

© Macmillan Publishers Limited; used by permission.

It is our hope that other Cory males tracing descent from John I will test and report to us their final Y haplogroup (including subclades) for comparison. While we are interested in fellow descendants

of Jeremiah William Cory, we are particularly interested in results from males of other lines of John Cory I descendants to aid our analysis.

A laboratory in Germany doing business as YSEQ that will perform this deep Y-DNA testing very quickly and inexpensively, and on an à la carte basis. For example, YSEQ will test to see if a sample carries the R-Y20128 mutation in about 4 weeks for \$23, including test kit shipping. (The lab will also do a complete analysis for a relatively low cost, although the processing takes longer because possible mutations marking a Y-DNA line are tested at each level.) We have no vested interest in this provider -- Y final haplogroup testing may also be obtained from various other services.

If enough John I descendants are willing to risk \$23 and participate, we could make significant strides toward solving the mystery of John I's origins in 2019. The YSEQ website is at:

<https://www.yseq.net>.

Regardless of source, if you are from the John I line and have final haplogroup analysis done, please report your findings to us. If you have questions, or want additional information, please do not hesitate to email Joe Cory at josephccory@hotmail.com.

Editors' Note: For more details about Y DNA and its potential in finding the origins of John I, see the article "New DNA Information on John I" by Mark in the March 2018 edition of the Cory Family Society Newsletter. ★★★

A Cory Family Story

HORACE WESLEY COREY (1859-1934) A RASCAL'S LIFE



Ancestry.com, John Corey
Horace Wesley Corey
ca 1888

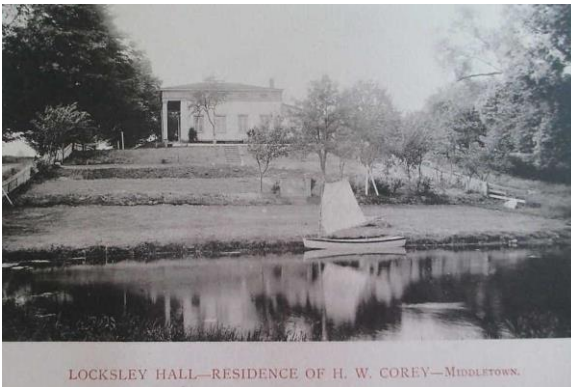
John Corey (John of Southold) with Vinnie Begley

On the Corey side of my family, we're pretty slow. I don't mean that we're not the sharpest crayons in the box. I mean we reproduce rather slowly, with long generational spans. I was born in 1955. My father, Alexander Corey, was born in 1904. And my grandfather, Horace Wesley Corey, was born in Port Jervis, New York, in 1859 - before the Civil War! Yeah, we're a bit slow.

All three of us have enjoyed varied careers that reflect broad interests of both technical and humanistic sorts. That said, the times were different and the approaches to those careers were different, too. It's not too much a stretch to say we men were different in personality, either. I'm a fairly free-spirited engineer-artist and a serial entrepreneur. Alex was a tightly-wound military man and lawyer. Horace? Well, I never knew him: he lived a long time ago. But I know something about him: he was a rascal!

Chris Koehler, our Cory Family Society newsletter editor, joined me and my wife Sue in October 2018 on a trip to Middletown, New York, where Horace was born and lived much, but not all, of his life. We met with Vinnie Begley, the archivist of the Carmelite Fathers monastery there, as the property once owned by Horace is now the novitiate dormitory there. Vinnie had been doing monastery research and reached out to me on Ancestry.com. He gave us some fascinating additional

information about this man I knew only by his reputation through my father (surprise: they did not get along well). Vinnie is also co-author of this piece, with photos by Chris Koehler unless otherwise credited.



LOCKSLEY HALL—RESIDENCE OF H. W. COREY—MIDDLETOWN.

Ancestry.com, John Corey

Locksley Hall ca 1892



Brandsma Priory October 2018

By way of early career we can say this: Horace was raised and schooled in and around Newburgh and Port Jervis, New York, by his parents Alexander and Cordelia (House) Corey. Old Alex was a carpenter and a bit of a scoundrel himself (thereby hangs another tale or two for another day).

Horace started work after high school with a W. E. McCormick, who was a “civil engineer” selling real estate (perhaps what we would call a developer today). He was later employed by the Erie Railroad as a surveyor, then as a salesman for the Marvin Safe Company, travelling through the Eastern states until 1884, when he took up residence in Middletown as an agent for State Senator Henry Low, and then on his own in the real-estate business after Low died in 1887. That year, he partnered with two other local men to buy the Casino Rink and convert it to a stage theatre. It burned to the ground (hmmm...) and they sold stock to build a grand, new Casino Theatre with 1200 seats – and Horace’s Art & Music store on the ground floor. They staged plays and brought in travelling acts for recitals and vaudeville. It was quite successful.



http://cinematreasures.org

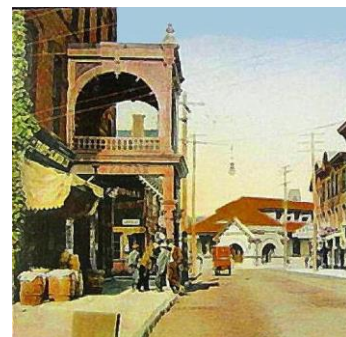
**Auditorium Of The Casino Theatre
In 1893**



HORACE W. COREY,
Manager of the Casino Theatre.

Ancestry.com, John Corey

Horace Wesley Corey



from "Stratton Theatre and Train Station, 1910", Dwight Goss, as seen on finartamerica.com

**The Former Casino Theatre
In 1910**

During the time that Horace was running the Casino Theatre, he staged a charity event there that gave rise to yet another of his side businesses. As told to me by my father, to raise money, patrons were shown bare feet and ankles of a number of people (I presume female) below a slightly raised

stage curtain. They bid on the various feet toward a dinner date with each to the highest bidder. Apparently, the auction was quite successful, but thoroughly upset some local clergy who found the whole process immoral and made no bones about their opinions in the local papers.

In response, according to early Carmelite archivist Alfred Isacson (sic), a new paper, the weekly *Middletown Forum*, was born. In it, Horace's "A Saturday Night Sermon" offered an anti-church and unaligned iconoclastic perspective in a time when most papers were solidly tied to one political party or another. This foray into publishing also produced a number of booklets on skeptical philosophy.

Meanwhile, our hero continued developing residential properties by subdividing farms in the area around Middletown. And to show he was not above practical, hard work, we cite a note in the *Middletown Daily Argus*, March 26, 1898, which describes how he lost a fingertip while helping workers at one of the development lots. The finger was in the wrong place while he was holding a stake when the hammer came down. A Dr. Hulett amputated the remains at the first joint and the paper's notice further relates, "Mr. Corey showed his nerve by calmly smoking a cigar while the operation was being performed." Ouch. Tough Guy.

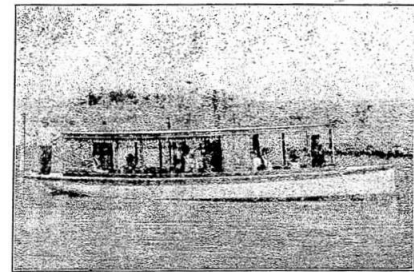
Horace had three wives (but not all at once). He had, as near as I can figure, at least six different trades (also not all at once). And he found himself defendant in court at least three times. In that last, he shares a record with my family's American progenitor, John I. (My pedigree: John I, Isaac, David, Benjamin, Alexander, Benjamin *again*, Alexander *again*, Horace, Alexander *yet again*, and me. Yep, John 1 is just my 7-greats grandfather across four centuries. Slow, I tell you! And cranky.)

Sarah ("Sadie") Mapes (1858-1899) and Horace were married in Middletown on January 8, 1884 (or 5), when she was 27 and he was 26. The Mapes family, like the Coreys, appear in the earliest records of Southold, Long Island, New York, and had migrated upstate when the Minisink Patent was opened for non-native settlement in 1704.

Coreys, as noted, were generally cantankerous folk in those days, and it may be that marrying Sadie, despite her advanced years for a bride of the time, was intended to give Horace a step up the ladder of social respectability. Horace's father Alexander was a local carpenter not noted for his polish or social standing (yep, court appearances for various offenses, some quite unappealing). Sadie, according to her obituary (*Middletown Daily Argus*, June 24, 1899), was fluent in both German and French as well as an accomplished organist. Maybe Sadie's dad, John Wesley Mapes, was swayed to give her hand by the middle name he shared with Horace! The marriage was to last just fourteen years, during which time they took in a girl named Hattie and adopted her. I don't know more about her, which is a very real frustration for me.

The family moved out of from Middletown proper to the country property they bought in 1892 (soon after his mother's place in Port Jervis was destroyed by fire...hmm.), which site is now part of the grounds of the Carmelite monastery. Horace's plan was to convert what was then known as the old Conkling orchards and stream into a resort, by damming the stream to make a lake for boating. He named the place "Lakeside" at first but changed it to Locksley Hall for most of their time there. Locksley Hall was the name of Robin Hood's ancestral home, so I'm sure there's some meaning or message in there.

Horace was into multiple activities in these years, and one that shows the breadth of his interests there is his building a 35-foot steamboat named for his mother Cordelia. His brother-in-law Harvey Oles did the steam fitting, but the boat was designed by Horace and built by him in the barn at Locksley Hall. The *Middletown Daily Argus* of June 24, 1896, pictured this craft and reported its details, including its trials on the lake there, then the Hudson river, and its intended berth at Cornwall "beside F. O. Rockefeller's naphtha launch." If that's true or boasting and name-dropping I cannot say! Not long after, the barn burned to the ground. (There was \$900 insurance on it...hmm.)



STEAM YACHT "CORDELIA."

Steam Yacht "Cordelia"

Whether because the resort at Locksley Hall didn't succeed or because Sadie got sick, the couple moved back to town in January 1899. Sadie died there after two years' illness, likely tubercular. Fire took most of the Locksley Hall mansion less than a month after they moved out. (It was insured, of course...hmm.) Horace's sister Ella acquired it then, but it was quickly flipped to a Henry McBrain, and then by July 1899 to James Wallick, a Casino Theatre actor-producer who was previously in a major lawsuit with Horace.

Do you notice a strange proclivity of Horace-related properties in combustion?

Horace married again, to his secretary Minnie Augusta Schafer (1873-1932), just shy of a year later (June 17, 1900) in a private ceremony. Hey, it was a new century. Minnie was also from a respectable local family. Her father Milton was a pharmacist (I still have his portable dram weight scales). Her mother, Mary Elizabeth Carpenter, was from yet another of the early Southold families. Four years later, Minnie bore my dad, Alexander.

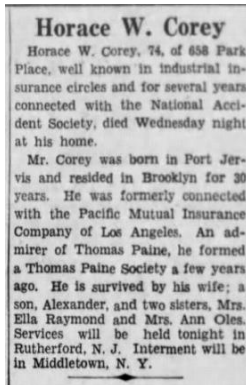
The happy couple lived in Middletown at first, but moved to Brooklyn soon after Alex was born, where Horace took a position as general manager for the New York offices of the Boston-based Equitable Accident Insurance Company. Did he leave town willingly? I don't know. He also was associated with the Pacific Mutual Insurance Company in the City. (Insurance. Interesting.)

Horace wrote and gave many speeches on what we might now call a libertarian philosophy while living in Brooklyn. He was a founder of a Thomas Paine Society (though not the one that survives today). I have copies of many of his speeches exclaiming in favor of personal freedom and rejecting authorities of church, state, and social custom. There are even some letters of appreciation from his audience members.

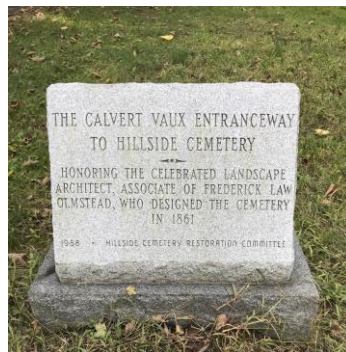
I imagine that he found corporate life stifling, so he must have struggled in his roles in the larger insurance companies -- and Horace was fond of his whiskey. I have heard tales of my dad hiding with his mother when Horace came home from the taverns angry about something. Not pretty. They may have separated at some time after Alex was grown. I have also heard the story of her death in October 1932 "in the depths of the depression" and after a long invalid time, with only her son (and not Horace) present. Minnie is buried in in Bethel Cemetery in Winterton, New York (not far from Middletown), in the Schafer family plot.

On April 17, 1934, in the few months after Minnie died and in declining health himself, Horace embarked on his third marriage, to his secretary, Mamie V. Lynch (1881-1940). He died eight days later, on April 25, 1934. Obituaries in both Brooklyn and Middletown say he breathed his last at his Brooklyn home. Funeral services were held in the Rutherford, New Jersey, home of his sisters, Ella Raymond and Sarah Oles.

Horace Wesley Corey was buried in the Hillside Cemetery, in Middletown, where we visited with Vinnie. There is a stone marking the general location of the Corey family plot, but no personal headstone at all.



*brooklyn daily eagle
April 27, 1934*



Vinnie Begley and John and Sue Corey at the Corey marker

My dad, expecting to be his father's only heir, discovered that the new wife had drawn up a will that left all Horace's estate to her alone. I mentioned that he was a lawyer, right? Well, he wasn't yet (he got his B.A. in 1928, but his first law degree came in 1948). Still, he pursued the case in Chancery Court, New Jersey, where he succeeded in getting the new gold-digging will overturned, which returned three rental houses in Berkeley Heights, New Jersey, to him, ending at last the tale of Horace Wesley Corey's affairs. By the way, that was the only case my father ever litigated personally. And he kept those houses rented out, at \$150 per month, until he died in 1993. ★★ ★

USING GOOGLE EARTH FOR GENEALOGY: PUTTING YOUR ANCESTORS ON THE MAP

*Frederick Wertz, Director of Digital Services, New York Genealogical & Biographical Society
excerpted from his article on the NYG&B website; used by permission*

Maps and mapping software have long been under-utilized as tools for family history research, but can be incredibly useful resources for genealogists of all skill levels to make more discoveries and form a greater, more holistic understanding of their ancestors' world.

The first part will introduce the technology and suggest ways to add your own family history information to a map. The second part will review how to import data others have created - digitized historical maps and other tools - and use it to analyze your own family history information in a geographic context.

...While these methods are particularly helpful for New York researchers (... examples [are] from New York State), everything may be applied generally to research in any area of the world.

Editors' Note: For the complete article, go to NYG&B's homepage www.newyorkfamilyhistory.org and enter Using Google Earth in the search bar. ★★★

Do You Know Gertie?

PHOEBE GERTRUDE "GERTIE" CORY GREENMAN (1876-1942) JOHN OF SOUTHOLD

Earl Cory



Shelley Cardiel of Portland, Oregon, found this photograph of "Gertie Cory" (written on the back) at the Portland Antique Show and reached out to us. She says that she does this as a hobby, "reuniting family treasures." The society has purchased the photograph and wants to give it to someone in Gertie's family.

Phoebe Gertrude Cory was born April 14, 1876, in Cason, Indiana, and died May 21, 1942, in Hoquiam, Gray's Harbor, Washington. She was the daughter of Noah Smith Cory (1826-1901) and Mary Ann Hyatt, Noah's second wife.

Gertie's husband, Francis Alonzo Greenman, was born October 8, 1877 in Lineville, Wayne, Iowa, the son of Sylvester Pettis Greenman and Mary Ellen Griffith. He died December 1939, in Hoquiam, Grays Harbor, Washington.

Done at the Brown Studios in Marshalltown, Iowa, the photograph appears to have been taken about 1900. Since Gertie was living in Washington State at that time, it must have been on a visit to family that lived in the area.

According to records found thus far, Gertie Cory and Francis Greenman had two children, Hazel Irene Greenman (m Arthur William Meyer) and Millard Sylvester Greenman (m1 Mary Almeda "Meda" Hasbrouck, m2 Lillie Iva Johnson). Hazel and Arthur's children were Barbara Lee Meyer and William Arthur Meyer. Millard and Almeda's child was Donna Mae Jean Greenman.

A member who would like this photo can contact me at webmaster@coryfamsoc.com.

Editors' Note: In the interest of newsletter space, we have summarized the genealogical information Earl provided about the descendants of Gertie and Francis. Contact Earl for the full text. ★★★

WILL WE SEE YOU IN DES MOINES?

ABOUT “CORYS SLEPT HERE”

A recent Facebook posting suggests that the dates for Cory/Corey places in the USA would yield a good proxy map for the spread of European settlement -- out from New England, across the mountains and down the Mississippi, across the great plains to the mountains and on to the Pacific. Food for thought!

In this issue we tell of Coreys, New York. Here are others.

Cory, Kentucky (Carter County)	1838	Founding of the county. Cory is located near Olive Hill and Grahn. No Cory namesake found.
Cory Grove, Iowa (Polk County)	1846	Arrival of Isaac Walker Cory. Church was founded here in 1848. We will learn more during our Reunion.
Coryville, Wisconsin (Kewaunee County)	1856	In the Green Bay area. Named for Abner Cory (1805-1870).
Corry, Pennsylvania (Erie County)	1858	Date Hiram Cory (1789-1875) bought land. Railroad station was named for him but with incorrect spelling.
Mount Cory, Ohio (Hancock County)	1872	Date the town was laid out under original name Cory when railroad was extended to that point. Named for D(avid) J(ennings) Cory (1801-1887), proprietor of the town site.
Coryville, Pennsylvania (McKean County)	1872	Civil war veteran Asa Howe Cory (1814-1892) was established as the first postmaster of Coryville, a town formed from Farmers Valley. Location also known as Frisbee.
Cory, Indiana (Clay County)	1872	In Perry Township, Clay County, in the Terre Haute metropolitan area. Named for Simeon Cory (1829-1872) a well-regarded Terre Haute merchant and benefactor.
Coryville, Nevada (Mineral County)	1883	Date post office was opened. Now a ghost town. Named for prospector James M. Corey, who in 1860 was a founder of Aurora, Nevada, also now a ghost town.
Cory, Colorado (Delta County)	1895	An early postmaster named the town after his wife Cora.
Cory, California (Glenn County)	?	An unincorporated community in Glenn County, located on the Southern Pacific Railroad 3 miles northeast of Orland. No Cory namesake found.
Corryville, Ohio (Cincinnati)	?	Neighborhood named for William Corry (1779-1833) early land owner, member of Ohio House of Representatives, later mayor of Cincinnati.
Corydon in Indiana; Iowa; Kentucky; and Pennsylvania (in McKean County and in Warren County), do not appear to be related. Wikipedia says “corydon” is a shepherd, a book, or a bird. Possible other places include Cory, LA; Cory, FL; Cory Point, SC; Cory Wood, SC; Cory Square, Manchester, NH; Corey MI; Coreys Bluff, IL; and Corey Hill, OR.		

We saw Corey Road in Marlborough, Massachusetts, in the June 2018 newsletter. Finding Cory homes and locations across the country could lead to an intriguing project – set up and maintain a “Cory home/location migration map.” Any volunteers? ★★

Corys Slept Here

COREYS, NEW YORK

Christine Koehler and Kathleen Delsanter (both John of Southold)

We Skinner sisters find one of those Cory places right in New York State, where we grew up. **Coreys, New York**, is a hamlet in New York State's Adirondack region, an area of more than 6 million acres, and the largest protected natural area in the Lower 48 of the United States. Coreys is twelve miles southwest of Saranac Lake, New York, near the Stony Creek Ponds.

Wikipedia tells us that the Adirondack region is "one of the first places to receive Forever Wild status in the United States," having been so designated in 1894 in response to post-Civil War logging demands of both Reconstruction and westward migration

Within the area and there are privately owned properties, regulated by the Adirondack Park Agency and consisting of residential and agricultural areas as well as recreational areas such as resorts and campgrounds. Some forestry is permitted. The 1932 and 1980 Winter Olympics were held in Lake Placid.

John J. Duquette wrote in the *Adirondack Daily Enterprise* on August 8, 1987, "Historians concur that no permanent Indian village existed within the Adirondacks, but some do believe that native settlements did, in fact, exist in the form of a summer encampment at the southern tip of Upper Saranac Lake. Here the Indians gathered to hunt and fish and smoke their game for winter."

Coreys is named for Jesse Corey (1818-1896), who was, according to Local Wiki *Historic Saranac Lake*, the first settler on upper Saranac Lake.

Again quoting Duquette:

During the 1850s Jesse Corey built his Rustic Lodge on the site of the former Indian occupation in order to take advantage of the considerable amount of travel coming across the Indian Carry.

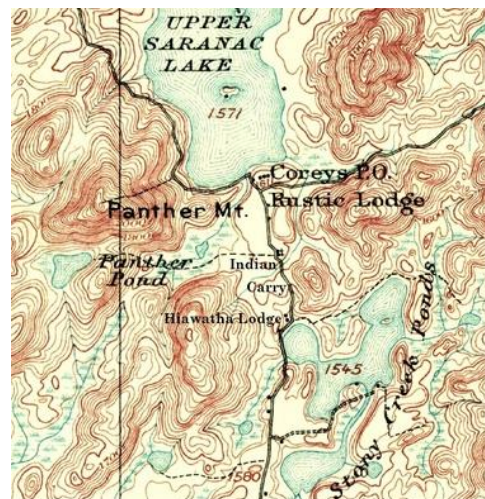
Because no roads existed then, the waterways served as boat highways, and the carry provided a vital link between the Raquette and the Saranacs.

Rustic Lodge soon became a very convenient stop-over for the guides and the sportsmen who were arriving in ever increasing numbers.

It appears from census data that Jesse operated Rustic Lodge as a seasonal hotel and lived in Brandon, New York, less than 100 miles away. Jesse retired in 1894 and the property, including the small island, was sold.



<https://www.adirondack.net/maps/countymaps/>



<https://localwiki.org/hsl/Coreys>



https://localwiki.org/hsl/Jesse_Corey

Jesse Corey was born on December 16, 1818, in New York, with Warren County given in the 1875 census. Find A Grave shows that he died May 28, 1896, and is buried in Pine Ridge Cemetery, Saranac Lake, New York.

Brief research has yielded little information on Jesse. In the 1880 census, he is reported as having been born in New York, with both his parents having been born in Rhode Island.

Jesse Corey seems to have been married 3 times, to Melinda --?--, to Marion --?--, and to Martha Graham. He had perhaps 6 children from those marriages, although some may have been stepchildren.

Here comes the fun part for us. We discovered a connection that we had not known about. Delving into the history of Coreys, we came upon a familiar name. In the 1950s, Kathy had a school friend, Ginny Hardy, a daughter of Dr. Eliza Caldwell and Dr. Edward A. Hardy. Kathy stayed with the Hardy family at their island summer place in the Adirondacks. Imagine our surprise to find the following on *Historic Saranac Lake*:

Corey's Island seen from the Indian Carry Golf Links at the south end of Upper Saranac Lake. Detroit Publishing, between 1900 and 1910.



Corey Island is a ten acre island at the south end of Upper Saranac Lake. One of the owners, Arthur Hardy Jr., called it Boulder Island, though that was apparently never an official name. The camp was started in the 1890s. In 1924, it was sold ...to Dr. Arthur Hardy, a physician from Mt. Vernon. In 1978 the island was owned by siblings Arthur Hardy Jr., Dr. Edward A. Hardy, and Helen B. Rooney...



House and boathouse on Corey Island in 2013.



Corey Island on southern Upper Saranac Lake, 1912.

Kathy remembers:

"... Ginny and me sleeping in the boathouse; playing board games & doing jigsaw puzzles in a large common room in another building with adult relatives and Hardy cousins; a long table for meals of delicious food prepared by the cook (I didn't know anyone else with a cook!); Dr. Hardy driving us by boat to a "trading post" kind of rustic store; diving into the cold lake; watching some of

the cousins play badminton (maybe, or volleyball); lots of pine trees and vegetation; and some cottages for other parts of the family. Also, the family dog—a collie, I think—riding with me in the back of the car on the drive up.”

Kathleen Skinner, daughter of Eleanor Grace Ramsay (1920-2013), grand-daughter of Ruth Barbara Corey (1894-1975), great grand-daughter of Horace Miller Corey (1846-1908), spent time on Corey Island!★★★

Our Cory Cousins

UK CORY GROUP ANNUAL EVENT

The UK Cory Family Friends social group is having their 2019 get together June 3 to June 7 (Monday through Friday) at the Sinah Warren Hotel, Hayling Island, Hampshire. To join them book at the hotel and let the event coordinator know at <https://corysociety.wordpress.com/contact/>. Joe Cory has said he is going, so anyone interested can contact him to compare notes.

	AS SEEN ON FACEBOOK	https://www.facebook.com/CoryFamSoc/
<p>A posting about Cory locations prompted the article in the issue. Other postings suggest future articles, such as Corys marrying into Mayflower lines, so we may be in direct contact to follow up. Let us know when you post an idea on Facebook so we don't miss it!</p>		

FROM THE EDITORS	<i>Remaining 2019 Newsletter Due Dates</i>
<p>We depend on members for suggestions. Send us questions, articles, notes, whatever you think of. Famous or infamous, it's all in the family!</p> <p>For June.....Friday, May 3</p> <p>For October..... Friday, August 30</p>	

The Cory Family Society Newsletter	
	<p>ABOUT THE SOCIETY Formed over 30 years ago, the Cory Family Society welcomes anyone interested in Cory, Corey, Corry, Corrie, etc. genealogy. Our goal is to celebrate our family ties, honor our ancestors, and leave knowledge for those who come after us. For more information, see www.coryfamsoc.com and https://www.facebook.com/CoryFamSoc/.</p>
BOARD MEMBERS 2017-2019	<p>President John Corey (John I of Southold) lives in New York. president@coryfamsoc.com</p> <p>Past President Fred Corey (William of Portsmouth) lives in Arizona. pastpresident@coryfamsoc.com</p> <p>Secretary Carolyn Corey (William of Portsmouth) lives in Montana. secretary@coryfamsoc.com</p> <p>Treasurer Christina Cory lives in California. treasurer@coryfamsoc.com</p> <p>Vice President/ Webmaster Earl Cory (Thomas of Chelmsford, Harpole) lives in California. webmaster@coryfamsoc.com</p> <p>Genealogist/ DNA Project Coordinator Thomas Corey (William of Portsmouth) lives in Nebraska. genealogist@coryfamsoc.com</p> <p>Newsletter Editor Christine Koehler (John I of Southold) lives in New York. newslettereditor@coryfamsoc.com</p> <p>Newsletter Assistant Editor Luke Davidson (John I of Southold) lives in Massachusetts. assistanteditor@coryfamsoc.com</p> <p>2019 Reunion Coordinator Joe Cory (John I of Southold) lives in Iowa. josephccory@hotmail.com</p>